

R Tools for the Command Line

> rt



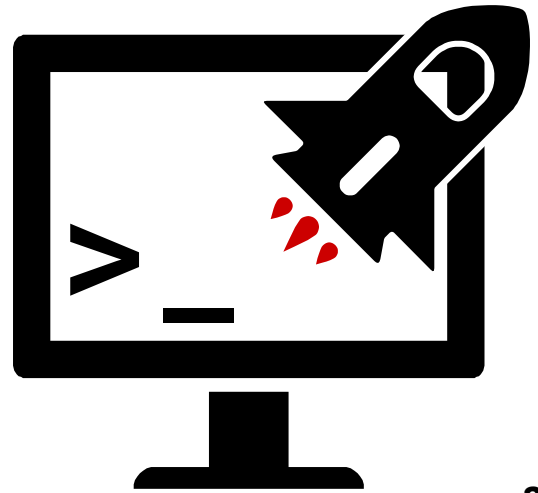
R Tools for the Command Line

> rt



R Tools for the Command Line

> rt



```
$ rt --help
```

Available Commands:

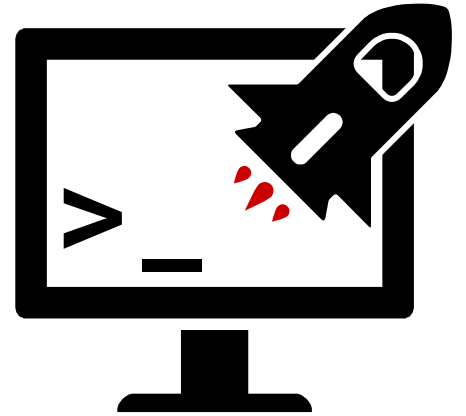
- 'rbuild' to bundle a local package.
- 'rcheck' to check a local package.
- 'rclean' to remove '[o|so]' files from a local package.
- 'rcov' to test the coverage of a local package.
- 'rdoc' to document a local package using roxygen.
- 'rhub' to upload a local package to rhub service.
- 'rinstall' to install a remote package (CRAN, GitHub etc.)
- 'rknit' to knit a knitr document (.Rnw, .Rrst) to PDF.
- 'rmake' to make a local package (document and install).
- 'rpkgdown' to build static HTML documentation with pkgdown
- 'rremove' to remove (uninstall) R packages.
- 'rshine' to run a shiny app.
- 'rspell' to check spelling in generated .Rd files.
- 'rtest' to test a local package.
- 'rupdate' to update all CRAN packages on your system
- 'rusage' to check variable usage.
- 'rwinbuild' to upload a local package to the winbuilder service.



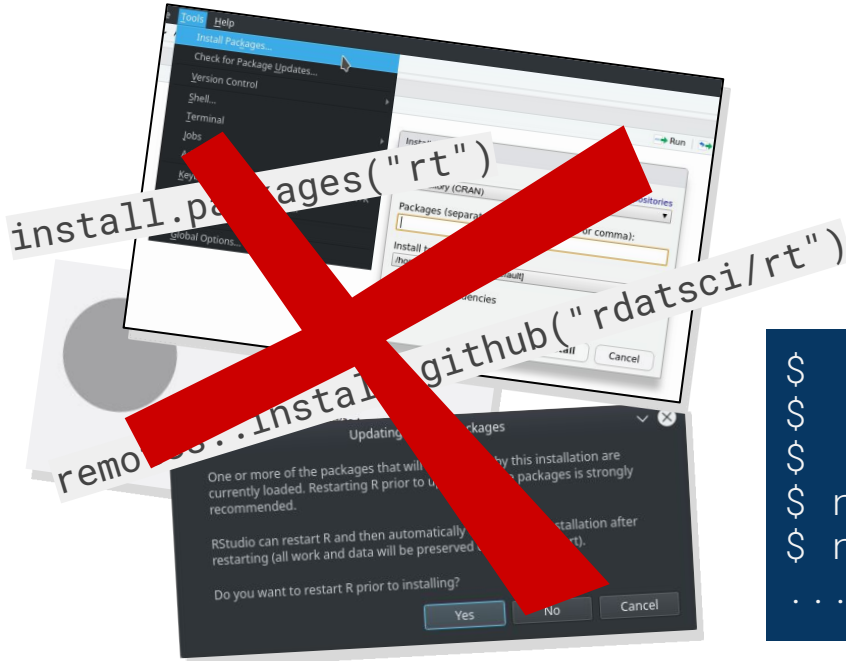
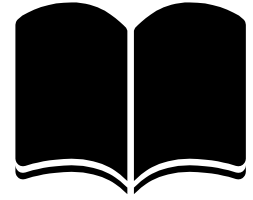
```
$ rt --help
```

Available Commands:

- 'rbuild' to bundle a local package.
- 'rcheck' to check a local package.
- 'rclean' to remove '[o|so]' files from a local package.
- 'rcov' to test the coverage of a local package.
- 'rdoc' to document a local package using roxygen.
- 'rhub' to upload a local package to rhub service.
- '**rinstall**' to install a remote package (CRAN, GitHub etc.)
- 'rknit' to knit a knitr document (.Rnw, .Rrst) to PDF.
- 'rmake' to make a local package (document and install).
- 'rpkgdown' to build static HTML documentation with pkgdown
- 'rremove' to remove (uninstall) R packages.
- 'rshine' to run a shiny app.
- 'rspell' to check spelling in generated .Rd files.
- 'rtest' to test a local package.
- 'rupdate' to update all CRAN packages on your system
- 'rusage' to check variable usage.
- 'rwinbuild' to upload a local package to the winbuilder service.



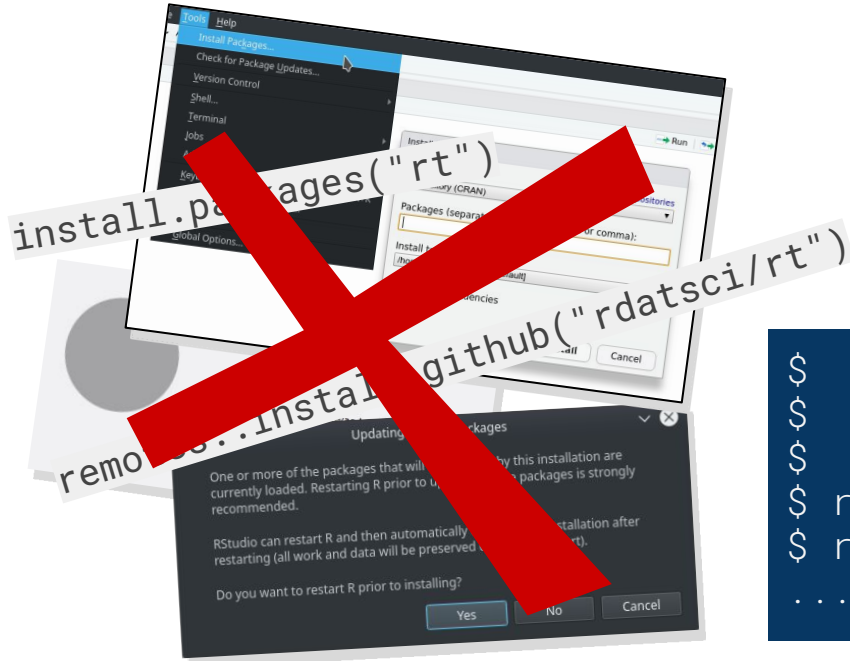
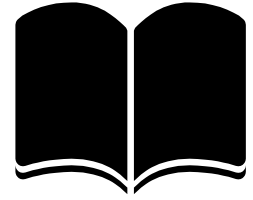
Why not in R (Studio)?



```
$ rinstall rt
$ rinstall rdatsci/rt
$ rinstall tidyverse/dplyr@r-0.7.8
$ rinstall gitlab:::(domain.com):usr/pkg
$ rinstall file.tar.gz
...
```



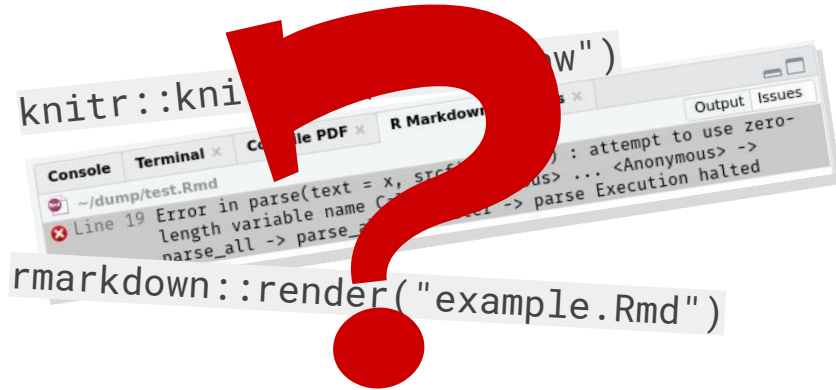
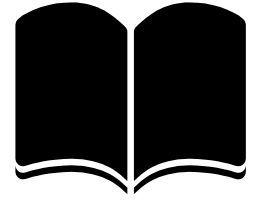
Why not in R (Studio)?



```
$ rinstall rt
$ rinstall rdatsci/rt
$ rinstall tidyverse/dplyr@r-0.7.8
$ rinstall gitlab:::(domain.com):usr/pkg
$ rinstall file.tar.gz
...
```



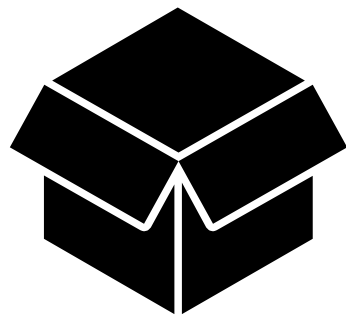
Why not in R (Studio)?



```
$ rknit main.Rnw
$ rknit example.Rmd
```



Manage R packages



```
~.config/rt/packages
```

```
## Uncomment to let rt update itself:
#rdatsci/rt
#basics
devtools
#work
mllg/batchtools
mlr-org/mlr
#git repo with subdirectories and branches/commits
https://foo.com/proj/repo.git/some_where/deep@v1.8.4
#local files
/home/user/srcs/pkg
#bioconductor
bioc::usr:pass@v1.8.4/pkg#commit123
```

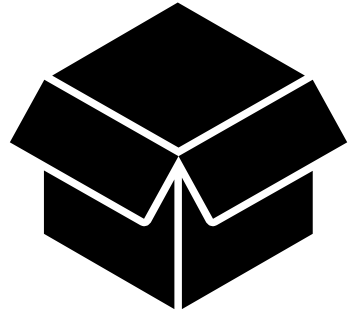
edit package file via:

```
$ rt --packages
```

or using a text editor.

New packages can be put here and installed via **rupdate**.

Manage R packages



```
~.config/rt/packages
```

```
## Uncomment to let rt update itself:
#rdatsci/rt
#basics
devtools
#work
mllg/batchtools
mlr-org/mlr
#git repo with subdirectories and branches/commits
https://foo.com/proj/repo.git/some_where/deep@v1.8.4
#local files
/home/user/srcs/pkg
#bioconductor
bioc::usr:pass@v1.8.4/pkg#commit123
```

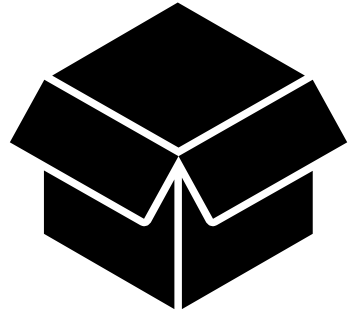
edit package file via:

```
$ rt --packages
```

or using a text editor.

New packages can be put here and installed via **rupdate**.

Manage R packages



```
~.config/rt/packages
```

```
## Uncomment to let rt update itself:
#rdatsci/rt
#basics
devtools
#work
mllg/batchtools
mlr-org/mlr
#git repo with subdirectories and branches/commits
https://foo.com/proj/repo.git/some_where/deep@v1.8.4
#local files
/home/user/srcs/pkg
#bioconductor
bioc::usr:pass@v1.8.4/pkg#commit123
```

edit package file via:

```
$ rt --packages
```

or using a text editor.

New packages can be put here and installed via **update**.

AUTO UPDATE

Automatic updates and rebuilds for new
R versions!



development tools



rtest

run unit tests (supports filtering)



rcheck

run R CMD check



rhub

run check on rhub (supports various targets and changes maintainer automatically)



rwinbuild

run check on winbuilder (with changed maintainer)



rspell

spellcheck using aspell



rcov

reports codecoverage



rusage

reports unused and undeclared variables



rdoc

runs roxygenize



rmake

builds tarball

development tools



rtest

run unit tests (supports filtering)



rcheck

run R CMD check



rhub

run check on rhub (supports various targets and changes maintainer automatically)



rwinbuild

run check on winbuilder (with changed maintainer)



rspell

spellcheck using aspell



rcov

reports codecoverage



rusage

reports unused and undeclared variables



rdoc

runs roxygenize

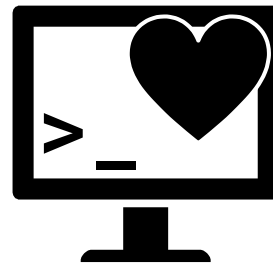


rmake

builds tarball

Credits

<https://github.com/rdatsci/rt>



github.com/

mllg

Michel Lang



surmann

Dirk Surmann



jakob-r

Jakob Richter